

Brummel Realty LLC

Land and Commercial Specialists
1107 S. Bridge St. Suite D
Yorkville, IL 60560

Office: (630) 553-3200
Fax: (630) 553-3270
Cell: (630) 997-8995

Managing Broker: Scott Brummel
brummelrealty@comcast.net
www.brummelrealty.com
Associate Broker: Tony Graff
Associate Sales Person: Garrett Douglass

KFLP Lisbon Center Farm

Big Grove Township, Kendall County, Illinois

Price: \$13,900.00 per acre or \$729,889.00

Location: Section 11, Big Grove Township, Kendall County, Illinois.
Approximately 60 miles Southwest of Chicago.

Size: 52.51 acres more or less

Soil: Lisbon silt loam, Saybrook silt loam, Elpaso silty clay loam,
Drummer silty clay loam, Elburn silt loam, Proctor silt loam,
and Saybrook silt loam

Tillable Acres: 52.27 acres more or less

Agridata Wgt. Avg: 172 - Corn

Tax ID #: 07-11-100-004

Status: Available

Improvements: None

Lease: Cash Rented for the 2008 crop year.

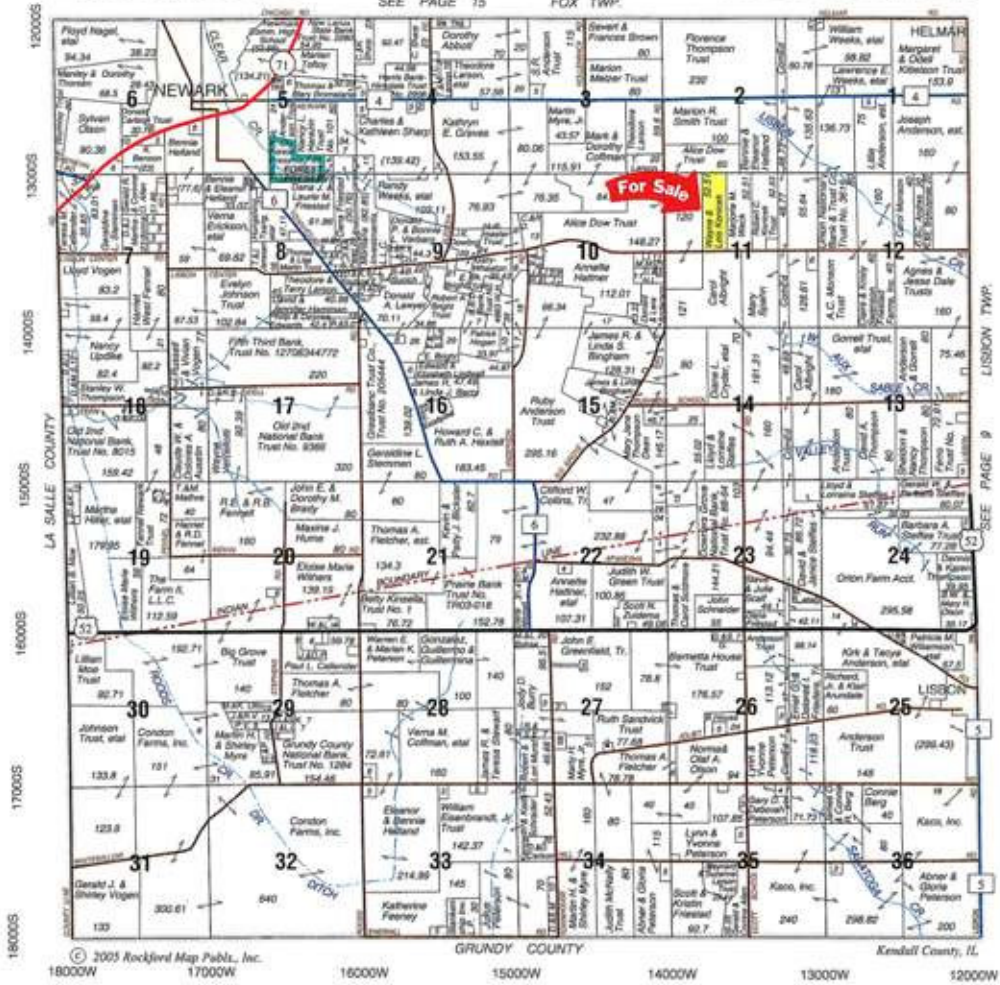
Comments: Excellent Soils

This information is offered by Brummel Realty LLC and is believed accurate but is not warranted.

BIG GROVE

T.35N.-R.6E.

SEE PAGE 15 FOX TWP.





Farmers State Bank

Somonauk Newark Sandwich Millbrook Plano

815-498-2396 815-695-5113 815-786-9292 630-553-2575 630-552-1414

www.fsbbancorp.com A tradition of community banking since 1900! Member FDIC

Aerial Map



map center: 41° 31' 22.64, 88° 30' 44.33
scale: 1:9900

Map provided by:

© AgriData, Inc. 2008
www.AgriDataInc.com

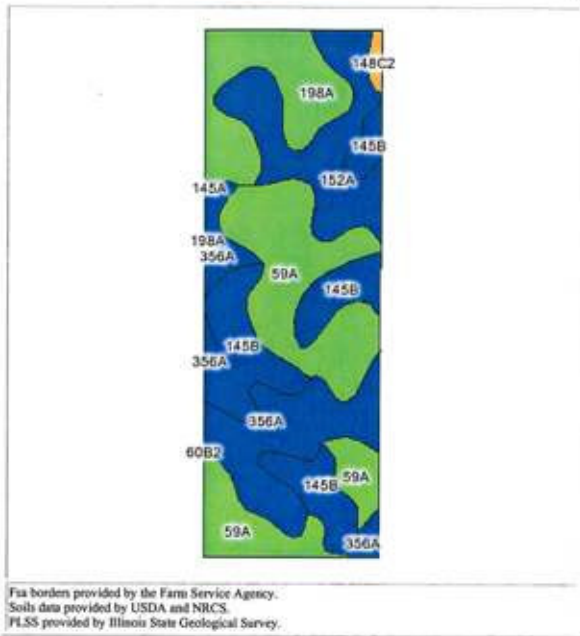
11-35N-6E
Kendall County
Illinois



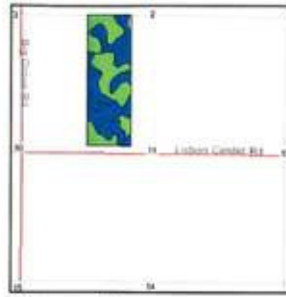
7/2/2008

Field borders provided by Farm Service Agency. Aerial photography provided by Aerial Photography Field Office.
PLSS provided by Illinois State Geological Survey.

Soils Map



Fia borders provided by the Farm Service Agency.
Soils data provided by USDA and NRCS.
PLSS provided by Illinois State Geological Survey.



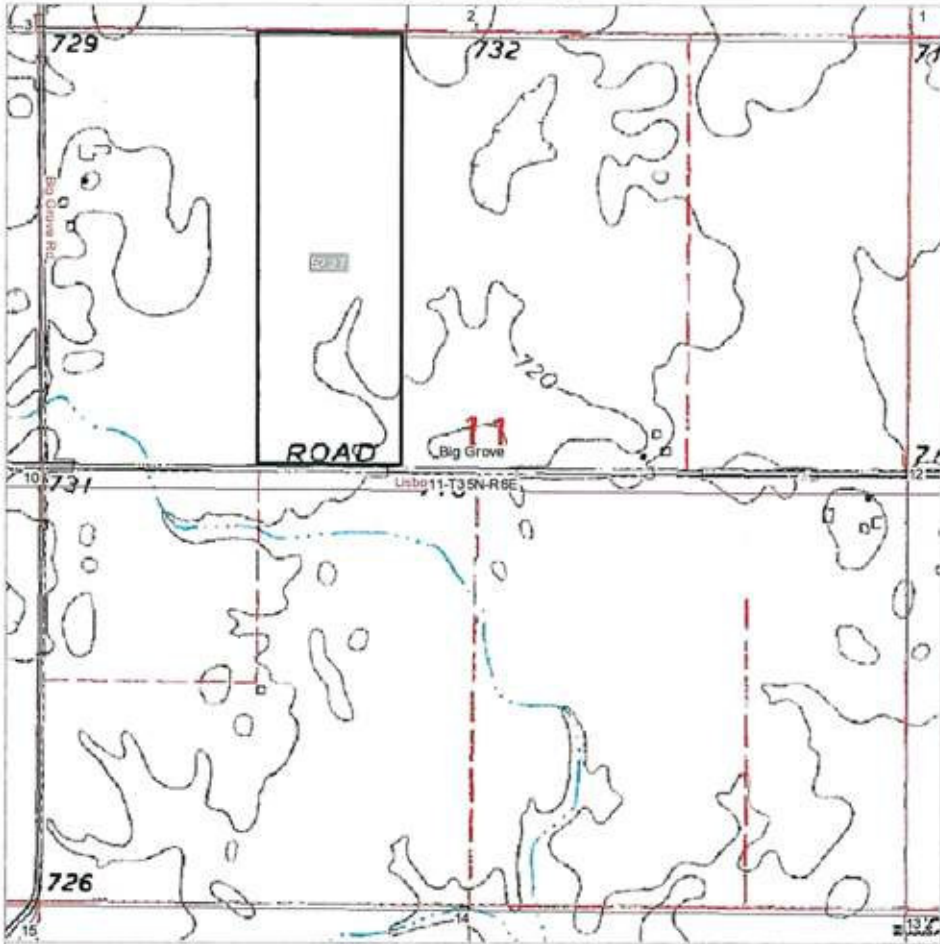
State: **IL**
County: **Kendall**
Location: **11-35N-6E**
Township: **Big Grove**
Acres: **52.3**



© 2008 AgriData, Inc.
www.AgriDataInc.com

Code	Soil Description	Non-Irr Class Legend	Acres	Percent of field	Non-Irr Class	Corn	Grass-legume hay	Grass-legume pasture	Oats	Soybeans	Winter wheat
59A	Lisbon silt loam, 0 to 2 percent slopes		15.5	29.6%	I	173	5.1	7.5	90	55	68
145B	Saybrook silt loam, 2 to 5 percent slopes		10.4	19.9%	IIe	160	5.5	8.3	85	50	61
356A	Elpaso silty clay loam, 0 to 2 percent slopes		10.1	19.3%	IIw	176	5.2	7.7	92	57	60
152A	Drummer silty clay loam, 0 to 2 percent slopes		8.4	16.1%	IIw	173	5.0	7.4	89	56	65
198A	Elburn silt loam, 0 to 2 percent slopes		7.4	14.1%	I	178	5.2	7.7	85	55	67
148C2	Proctor silt loam, 5 to 10 percent slopes, eroded		0.4	0.8%	IIIe	154	5.4	7.7	83	48	59
145A	Saybrook silt loam, 0 to 2 percent slopes		0.1	0.2%	IIe	162	5.6	8.3	86	51	62
Weighted Average						172	5.2	7.7	88	54	64

Topography Map



map center: 41° 31' 22.64, 88° 30' 44.33
scale: 1:9900

Map provided by:

© AgriData, Inc. 2008
www.AgriDataInc.com

11-35N-6E
Kendall County
Illinois



7/2/2008

Field borders provided by Farm Service Agency. Aerial photography provided by Aerial Photography Field Office.
PLSS provided by Illinois State Geological Survey.