

# Brummel Realty LLC

Land and Commercial Specialists  
1107 S. Bridge St. Suite D  
Yorkville, IL 60560

Office: (630) 553-3200  
Fax: (630) 553-3270  
Cell: (630) 997-8995

Managing Broker: Scott Brummel  
brummelrealty@comcast.net  
[www.brummelrealty.com](http://www.brummelrealty.com)  
Associate Broker: Tony Graff  
Associate Sales Person: Garrett Douglass

## Neal Subdivision

### Brooklyn Township, Lee County IL.

**Price:** #1 Parcel \$78,500.00  
#2 Parcel \$84,900.00  
#3 Parcel \$67,920.00 → Sold  
#4 Parcel \$79,200.00 → Sold  
#5 Parcel \$90,800.00

**Location:** 15 miles south of Rochelle 3 ¼ miles west of interstate 39.  
Near Compton.

**Directions:** From Route 30 & 251. Go south approximately 12 miles on 251 to  
Beemerville Road west to property.

**Size:** #1 Parcel 2.693 acres more or less  
#2 Parcel 3.960 acres more or less  
#3 Parcel 4.127 acres more or less → Sold  
#4 Parcel 4.984 acres more or less → Sold  
#5 Parcel 5.667 acres more or less

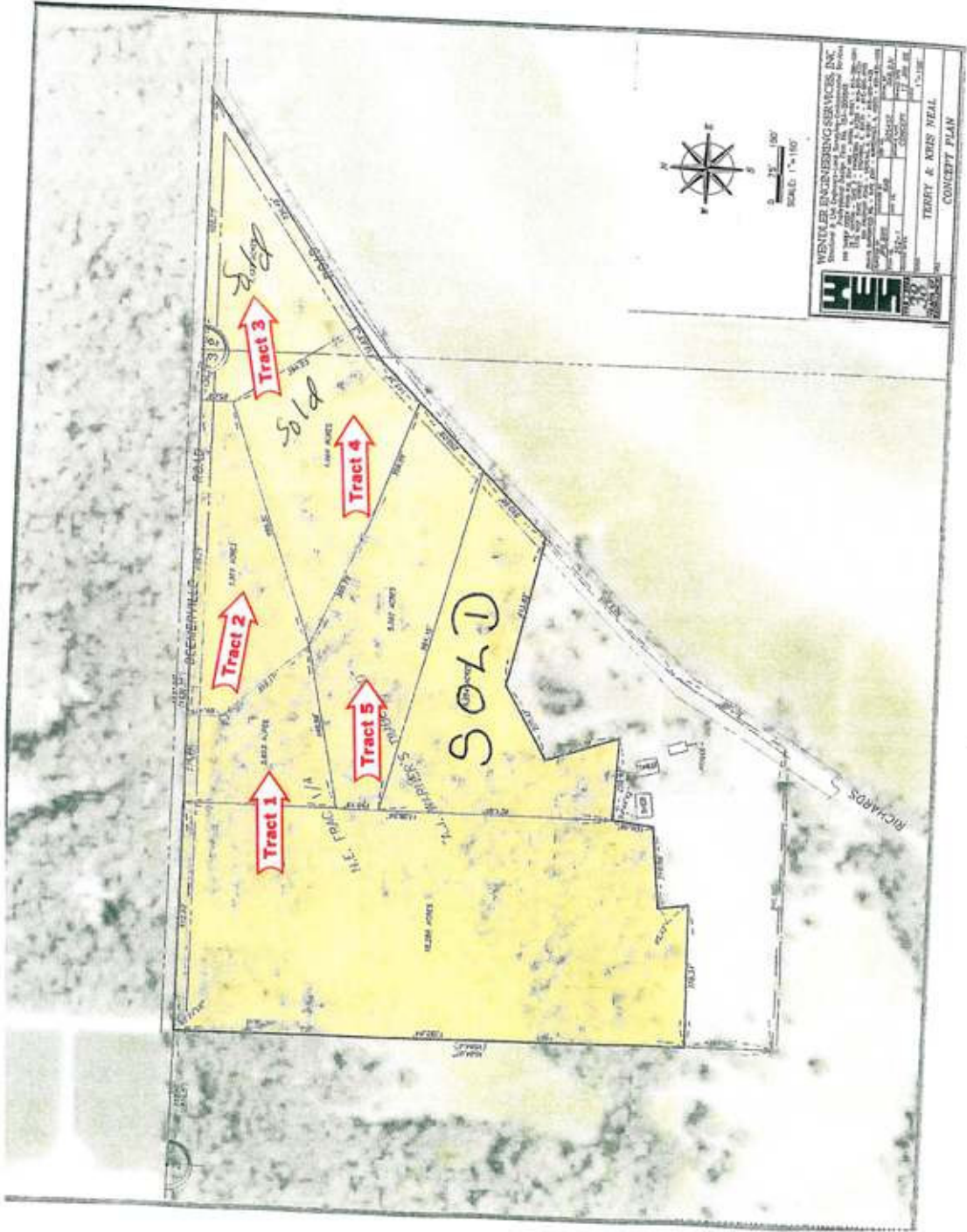
**Zoning:** All lots are zoned R-1, Rural residential

**Legal Description:** The Northeast half of section 3, Brooklyn Township, Lee County,  
Illinois.

**Schools:** Mendota Schools.

**Comments:** Just five minutes from Interstate 39 and Chicago Road interchange.  
Quick access to the Chicago suburbs. - Several partially wooded to  
Heavily wooded properties to choose from.

*This information is offered by Brummel Realty LLC and is believed accurate but is not warranted*



**WENZEL ENGINEERING SERVICES, INC.**  
 1001 W. 10th Street, Suite 100, Oklahoma City, Oklahoma 73106  
 Phone: (405) 233-1100  
 Fax: (405) 233-1101  
 Email: wenzel@wenzel-engineering.com

**TERRY & NEES NEAL**  
 CONCEPT PLAN

**SOLD**

**SOLD**

**Tract 3**

**Tract 2**

**Tract 1**

**Tract 5**

**Tract 4**



SCALE: 1" = 100'

