

# **Mackenzie Trust (G) - 55.25 Acres +/- in Kendall County, Illinois**



***55.25 Acres +/- Located in Section 2  
Lisbon Township, Kendall County, Illinois***

*PIN #: 08-02-426-003*

No Improvements  
PI: 135, Taxes for 2022: \$2,221.08  
44.28 Acres Tillable Per FSA

***Offered at \$13,900 Per Acre***



For More Information Contact:  
**Scott Brummel, Broker**

Brummel Realty, LLC  
1107 S. Bridge Street, ste D  
Yorkville, IL 60560

Office: 630-553-3200  
Fax: 630-553-3270

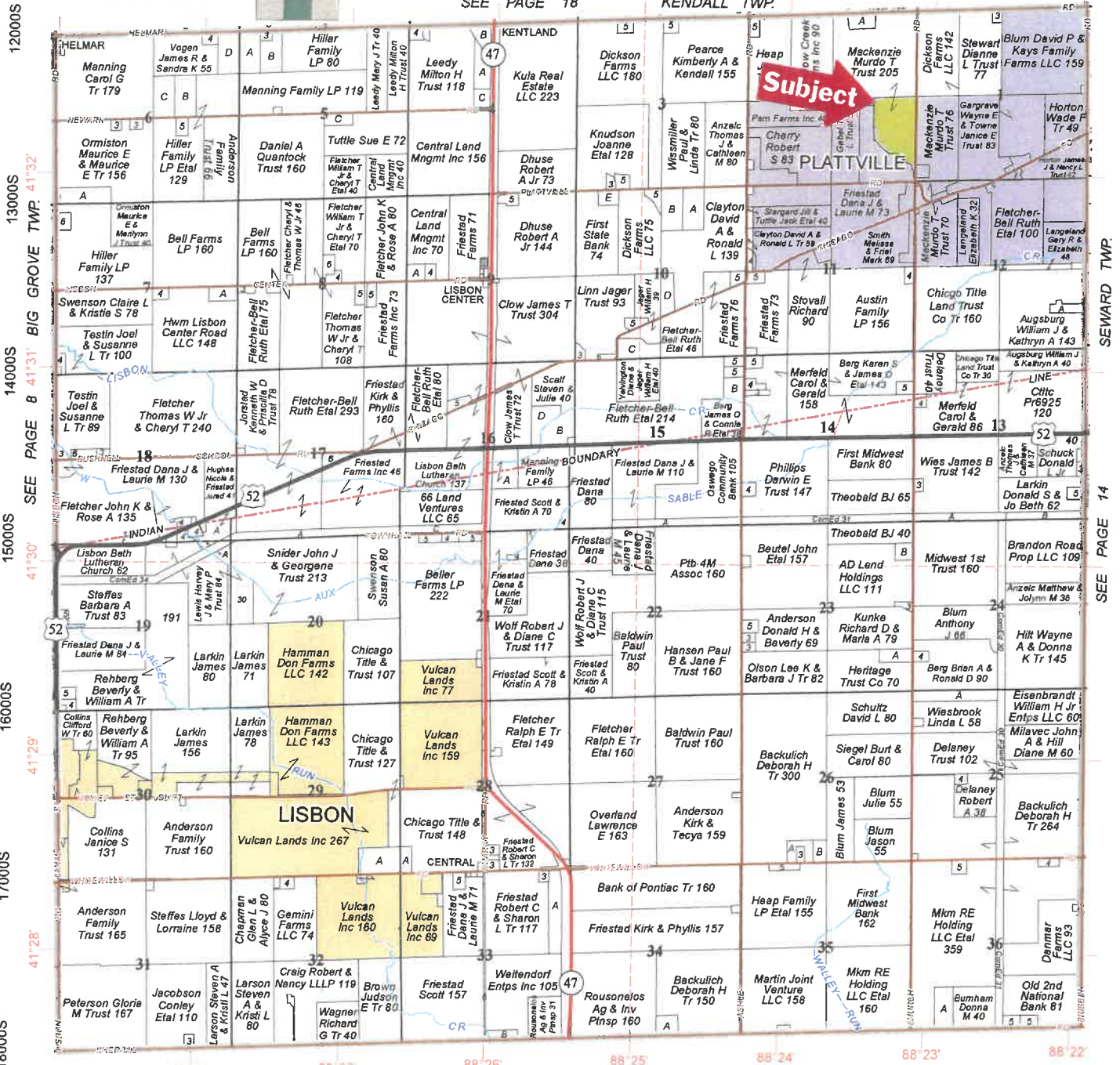
# LISBON

Refer to page 42 for keyed parcels

# T.35N.-R.7E.

SEE PAGE 18

KENDALL TWP.



© 2020 Rockford Map Pubs., Inc.

12000W 11000W 10000W 9000W 8000W 7000W 6000W

GRUNDY COUNTY

Kendall County, IL

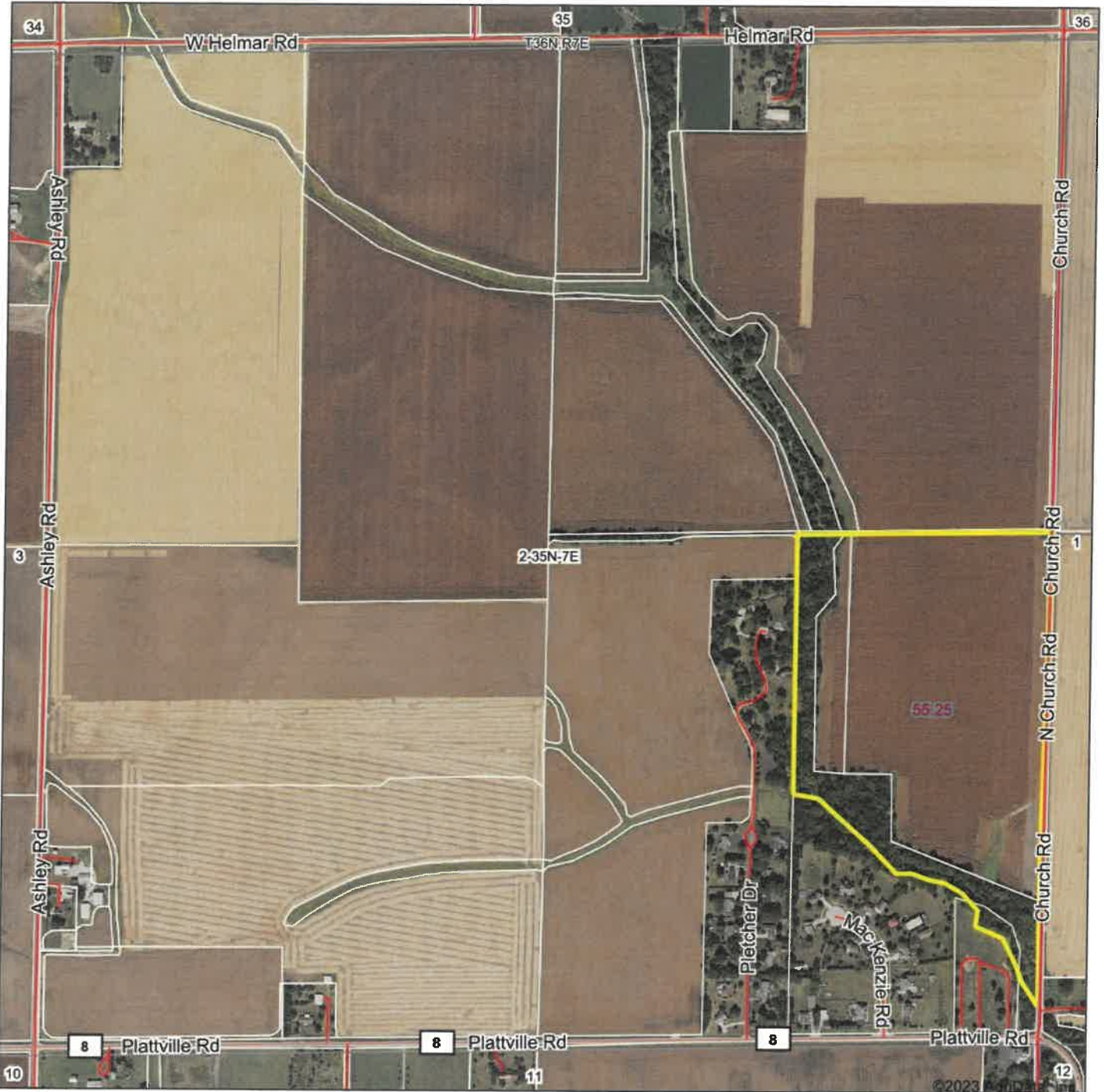
## Thank you advertisers.

A lot of effort and hard work is put into offering the highest quality, most accurate, and overall best plat book on the market. Publishing these maps would not be possible without the continued support of our advertisers. We encourage our readers to support the businesses that made this book available to you.



**ROCKFORD MAP PUBLISHERS**

# Aerial Map



Boundary Center: 41° 32' 12.65, -88° 23' 16.74

0ft 819ft 1639ft



**BRUMMEL REALTY LLC**

Land@brummelrealty.com

1107 S. Bridge Street, Suite D - Yorkville, IL 60950  
Office: 630-553-3200 Fax: 630-553-3270

Maps Provided By:

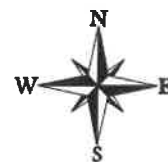


© AgriData, Inc. 2023

www.AgriDataInc.com

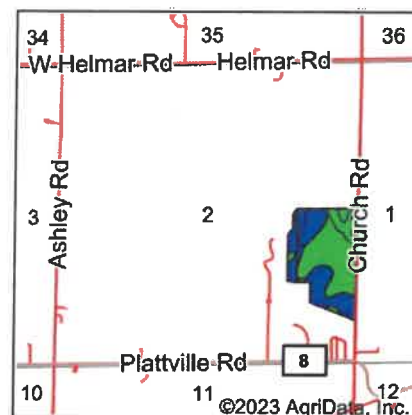
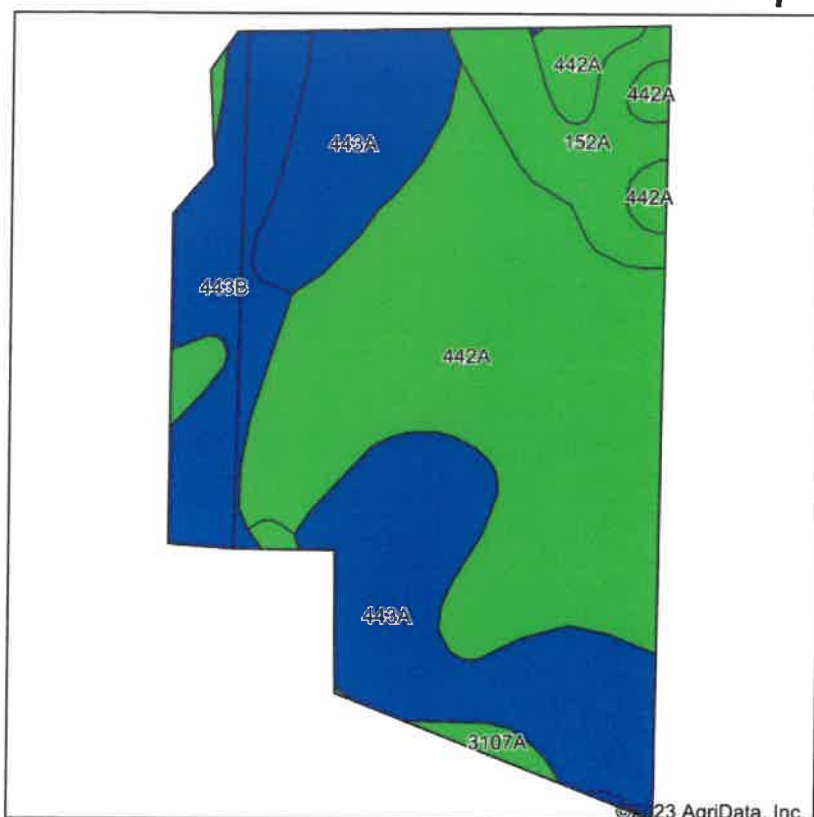
Field borders provided by Farm Service Agency as of 5/21/2008.

**2-35N-7E**  
**Kendall County**  
**Illinois**



6/19/2023

# Soils Map



State: **Illinois**  
 County: **Kendall**  
 Location: **2-35N-7E**  
 Township: **Lisbon**  
 Acres: **44.28**  
 Date: **6/19/2023**



**BRUMMEL REALTY LLC**  
 1107 S. Bridge Street, Suite C • Yorkville, IL 62450  
 Office: 630-563-1200 Fax: 630-563-1220

Land@brummelrealty.com

Maps Provided By:



© AgriData, Inc. 2023

www.AgriDataInc.com



Soils data provided by USDA and NRCS.

Area Symbol: IL093, Soil Area Version: 19

Code	Soil Description	Acres	Percent of field	Il. State Productivity Index Legend	Restrictive Layer	Corn Bu/A	Soybeans Bu/A	Wheat Bu/A	Crop productivity index for optimum management
442A	Mundelein silt loam, 0 to 2 percent slopes	20.74	46.8%	■	> 6.5ft.	188	60	74	138
443A	Barrington silt loam, 0 to 2 percent slopes	13.21	29.8%	■	> 6.5ft.	176	57	69	130
**443B	Barrington silt loam, 2 to 4 percent slopes	5.66	12.8%	■	> 6.5ft.	**174	**56	**68	**129
152A	Drummer silty clay loam, 0 to 2 percent slopes	3.53	8.0%	■	> 6.5ft.	195	63	73	144
3107A	Sawmill silty clay loam, heavy till plain, 0 to 2 percent slopes, frequently flooded	1.14	2.6%	■	> 6.5ft.	189	60	71	139
<b>Weighted Average</b>						<b>183.2</b>	<b>58.8</b>	<b>71.6</b>	<b>135</b>

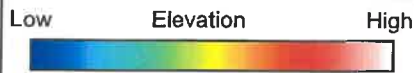
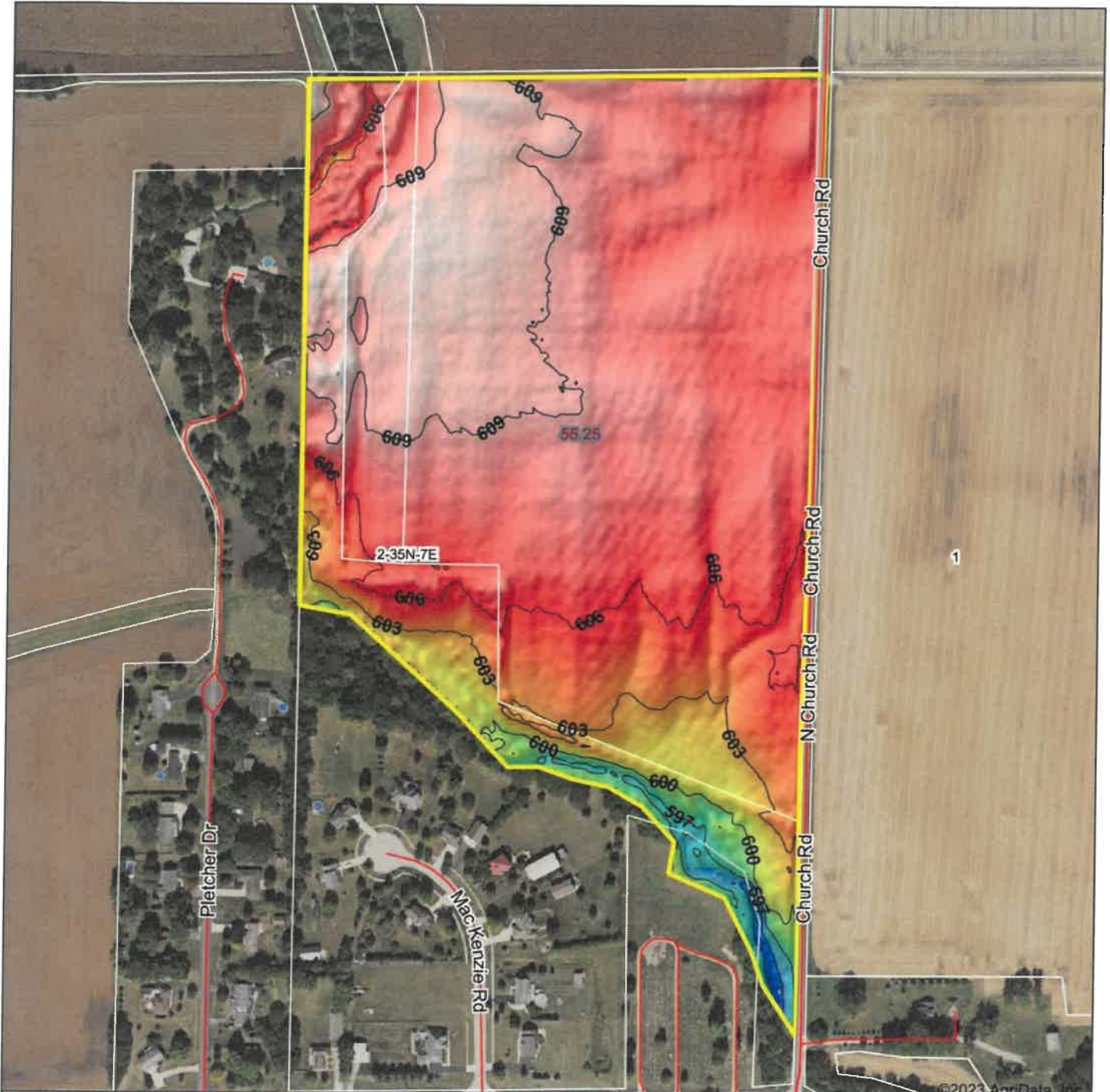
**Table: Optimum Crop Productivity Ratings for Illinois Soil by K.R. Olson and J.M. Lang, Office of Research, ACES, University of Illinois at Champaign-Urbana.** Version: 1/2/2012 Amended Table S2 B811

Crop yields and productivity indices for optimum management (B811) are maintained at the following NRES web site:

<http://soilproductivity.nres.illinois.edu/>

\*\* Indexes adjusted for slope and erosion according to Bulletin 811 Table S3

# Topography Hillshade



Source: USGS 3 meter dem  
 Interval(ft): 3  
 Min: 591.5  
 Max: 610.9  
 Range: 19.4  
 Average: 606.6  
 Standard Deviation: 3.02 ft



**2-35N-7E**  
**Kendall County**  
**Illinois**

Boundary Center: 41° 32' 12.65, -88° 23' 16.74



**BRUMMEL REALTY LLC**  
 11313 Birchwood Road, Suite 100, Springfield, IL 62764  
 Office: 618-251-2202 Fax: 618-251-2770

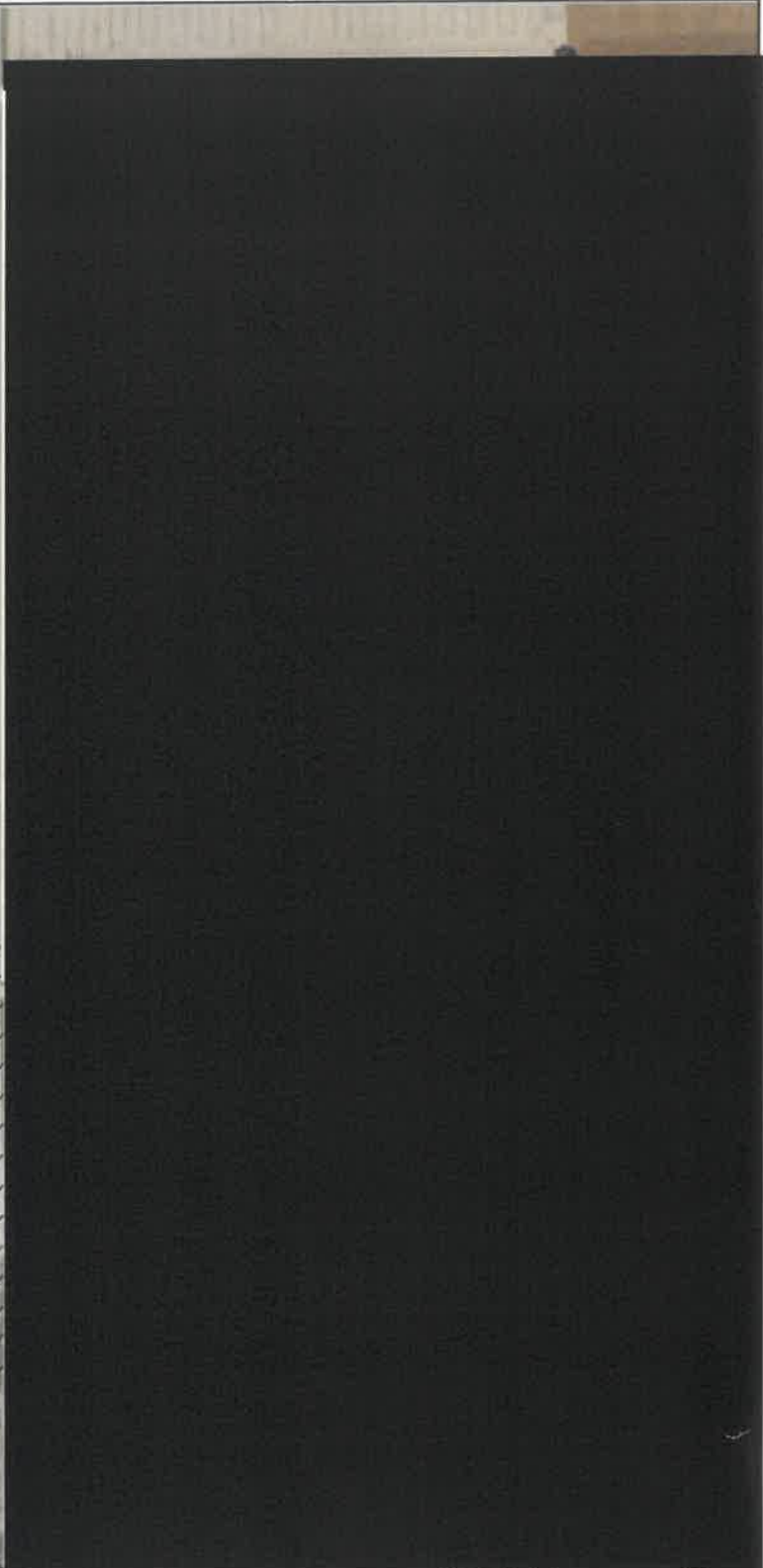
Maps Provided By:



© AgriData, Inc. 2023 www.AgriDataInc.com

Field borders provided by Farm Service Agency as of 5/21/2008.

©2023 AgriData, Inc.



**Common Land Unit** Tract Boundary

Non-Cropland

Cropland

**Wetland Determination Identifiers**

- Restricted Use
- ▼ Limited Restrictions
- Exempt from Conservation
- Compliance Provisions

**2023 Program Year**

Map Created April 23, 2023

**Farm 5742**  
**Tract 1075**

United States Department of Agriculture (USDA) Farm Service Agency (FSA) maps are for FSA Program administration only. This map does not represent a legal survey or reflect actual ownership; rather it depicts the information provided directly from the producer and/or National Agricultural Imagery Program (NAIP) imagery. The producer accepts the data 'as is' and assumes all risks associated with its use. USDA-FSA assumes no responsibility for actual or consequential damage incurred as a result of any user's reliance on this data outside FSA Programs. Wetland identifiers do not represent the size, shape, or specific determination of the area. Refer to your original determination (CPA-026 and attached maps) for exact boundaries and determinations or contact USDA Natural Resources Conservation Service (NRCS).