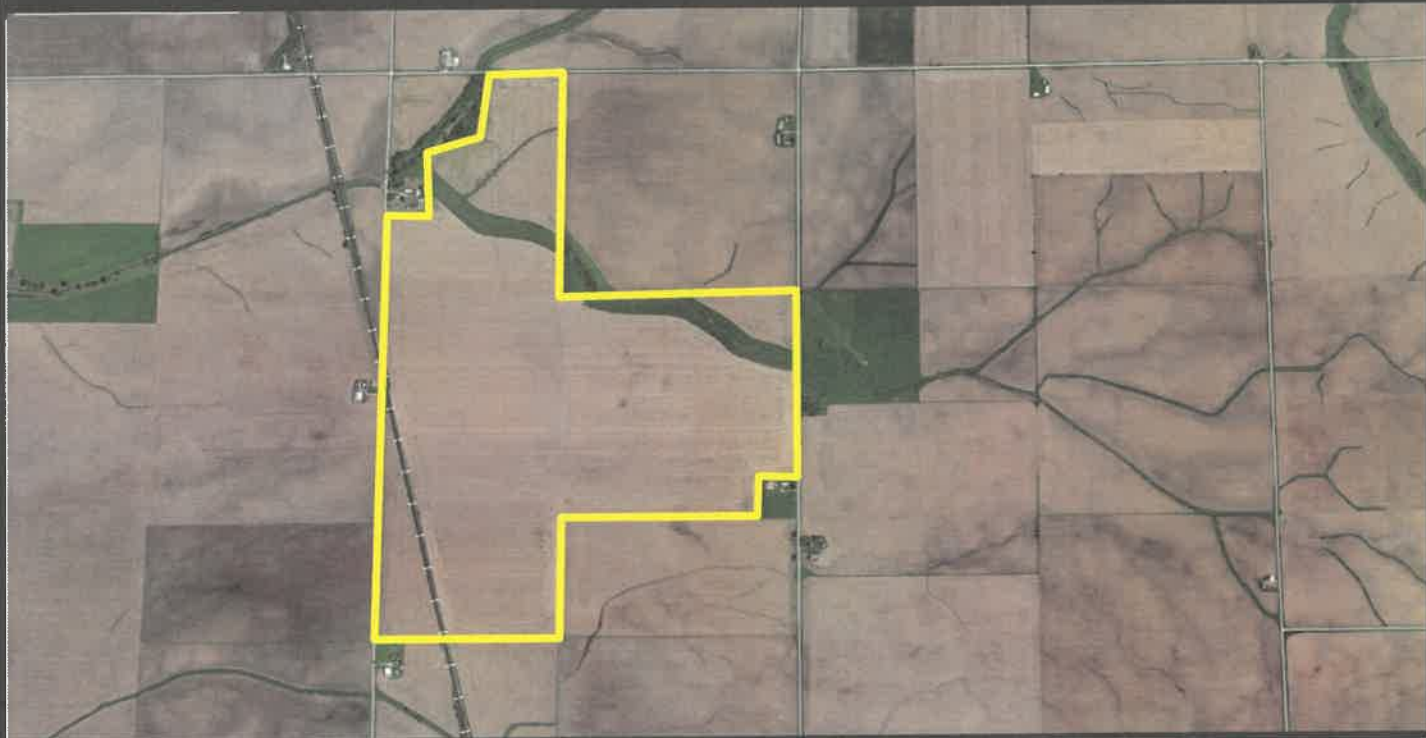


AR Trust - Miller Farm 426 Acres +/- in Bureau County, Illinois



***426 Acres +/- Located in Sections 7 & 18
Milo Township, Bureau County, IL***

PIN #: 25-07-100-003, 25-07-400-002, 25-18-100-001

No Improvements, 19.7 Acres of CRP income of \$7,098 Annually
Class A Soils - 141.5
406.2 Acres Tillable Per FSA

Offered at \$16,500 Per Acre



For More Information Contact:
Scott Brummel, Broker

Brummel Realty, LLC
1107 S. Bridge Street, ste D
Yorkville, IL 60560

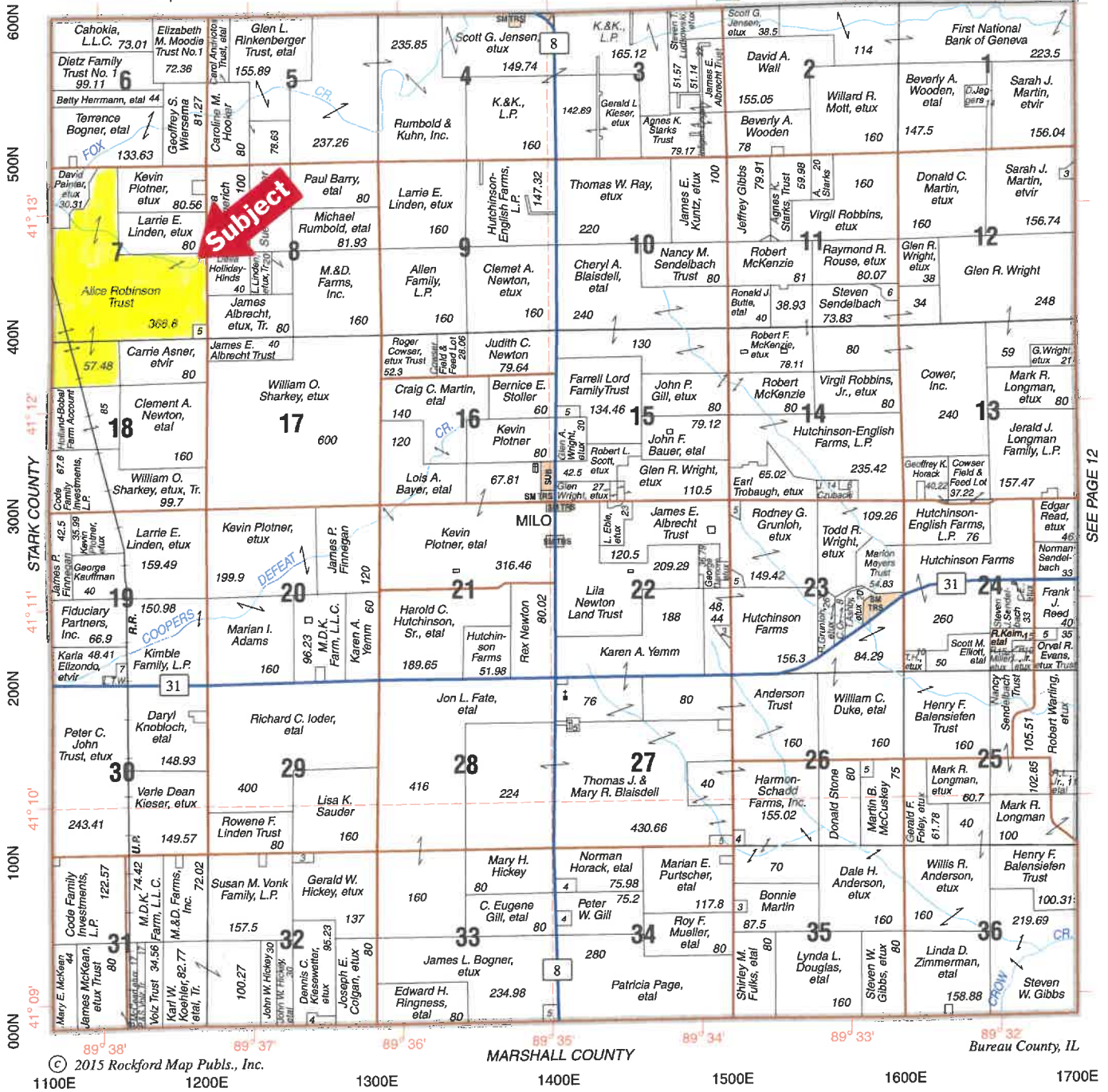
Office: 630-553-3200
Fax: 630-553-3270

MILO

SEE PAGE 16

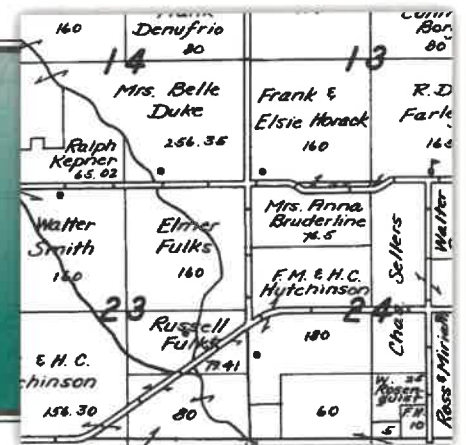
SEE PAGE 18

T.14N.-R.8E.



SEE PAGE 12

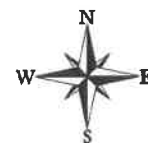
The Legacy Collection.
 Visit rockfordmap.com to buy past editions dating back to 1944.



Aerial Map



Boundary Center: 41° 12' 43.58, -89° 37' 48.1



4/3/2024



BRUMMEL REALTY LLC
 1107 S. Bridge Street, Suite D - Yorkville, IL 60550
 Office: 630-563-3200 Fax: 630-563-3270

Land@brummelrealty.com

Maps Provided By:

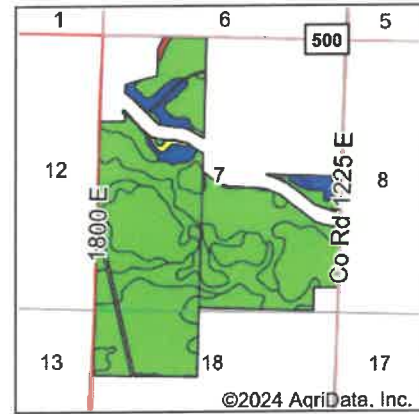
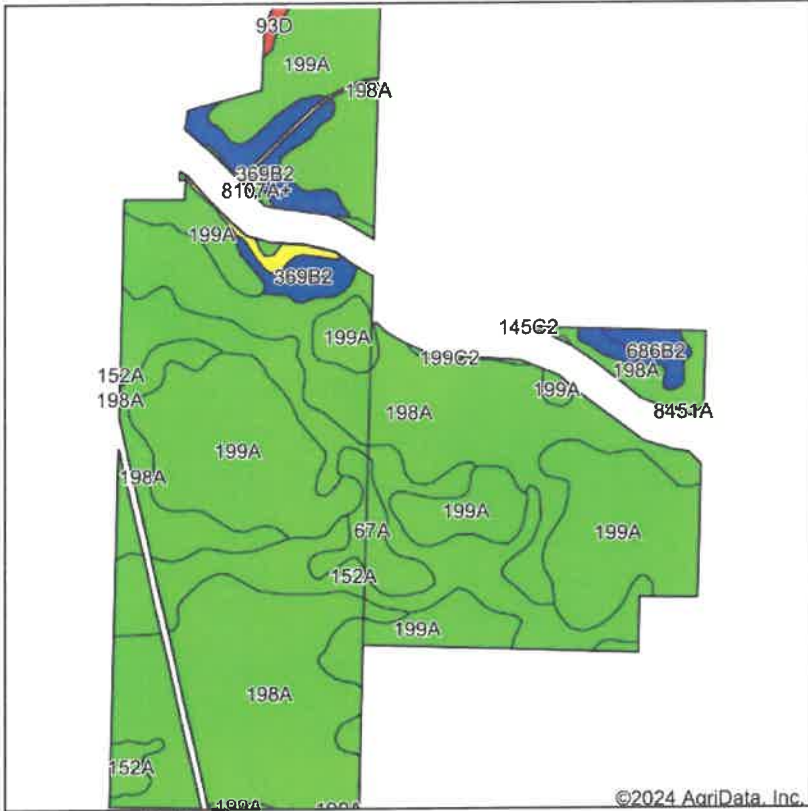


© AgriData, Inc. 2023 www.AgriDataInc.com

Field borders provided by Farm Service Agency as of 5/21/2008.

7-14N-8E
Bureau County
Illinois

Soils Map



State: **Illinois**
 County: **Bureau**
 Location: **7-14N-8E**
 Township: **Milo**
 Acres: **402.94**
 Date: **4/3/2024**



BRUMMEL REALTY LLC
 1107 S. 8th St. Street, Suite D - Yorkville, IL 62450
 Office: 630-563-1200 Fax: 630-563-1270

Lend@brummelrealty.com



© AgriData, Inc. 2023 www.AgriDataInc.com



Soils data provided by USDA and NRCS.

Area Symbol: IL011, Soil Area Version: 21
 Area Symbol: IL175, Soil Area Version: 16

Code	Soil Description	Acres	Percent of field	Il. State Productivity Index Legend	Restrictive Layer	Corn Bu/A	Soybeans Bu/A	Wheat Bu/A	Crop productivity index for optimum management	*n NCCPI Soybeans
198A	Elburn silt loam, 0 to 2 percent slopes	160.22	39.8%		> 6.5ft.	197	61	74	143	78
199A	Plano silt loam, 0 to 2 percent slopes	143.78	35.7%		> 6.5ft.	194	60	74	142	81
**152A	Drummer silty clay loam, 0 to 2 percent slopes	61.41	15.2%		> 6.5ft.	**195	**63	**73	**144	74
**369B2	Waupecan silt loam, 2 to 5 percent slopes, eroded	16.24	4.0%		> 6.5ft.	**178	**55	**70	**131	65
**67A	Harpster silty clay loam, 0 to 2 percent slopes	9.45	2.3%		> 6.5ft.	**182	**57	**68	**133	79
**686B2	Parkway silt loam, 2 to 5 percent slopes, eroded	4.07	1.0%		> 6.5ft.	**177	**56	**69	**131	71
**290C2	Warsaw silt loam, 5 to 10 percent slopes, eroded	2.48	0.6%		2.1ft. (Strongly contrasting textural stratification)	**150	**48	**60	**111	52

Soils data provided by USDA and NRCS. Soils data provided by University of Illinois at Champaign-Urbana.



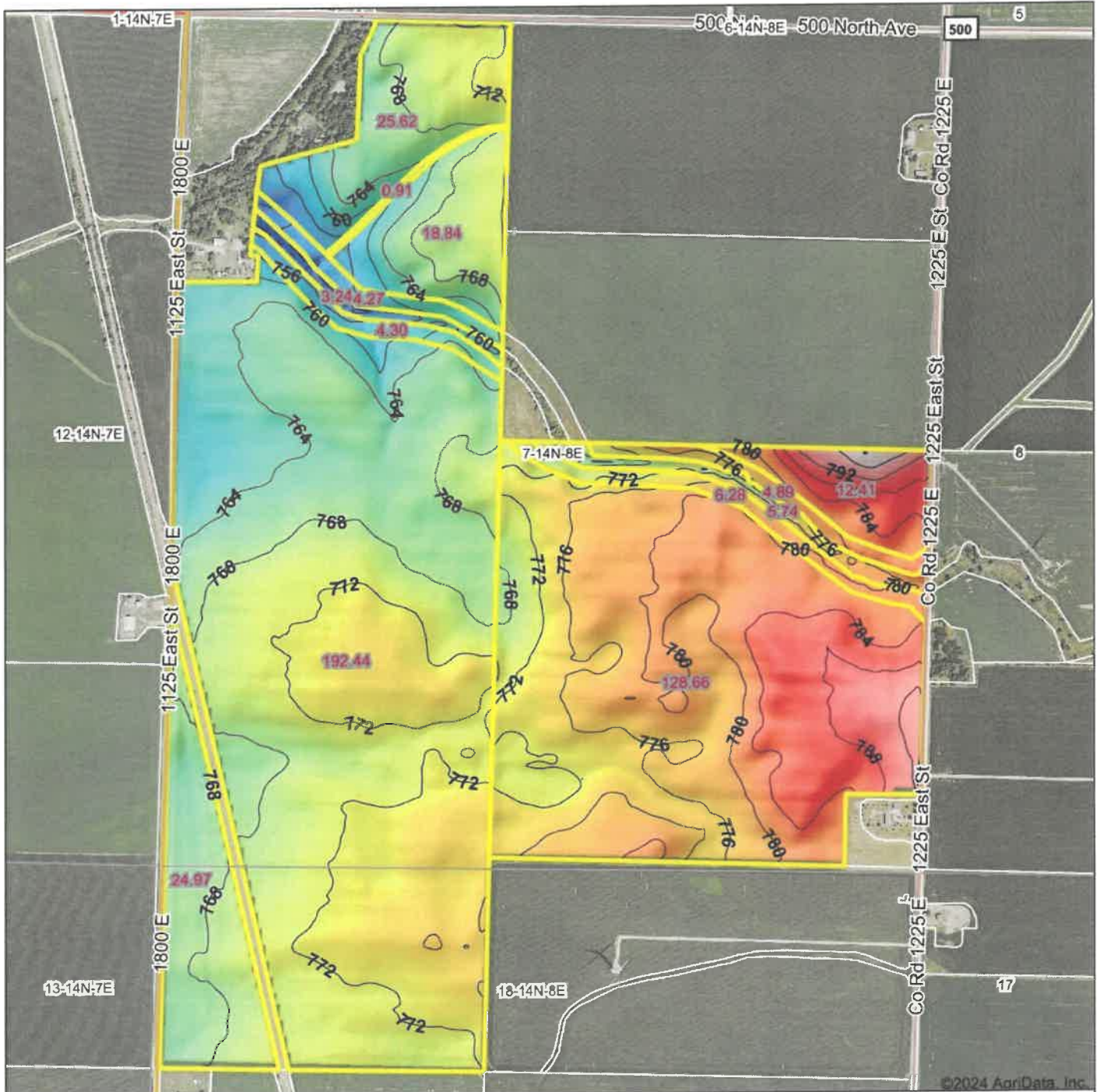
Code	Soil Description	Acres	Percent of field	Il. State Productivity Index Legend	Restrictive Layer	Corn Bu/A	Soybeans Bu/A	Wheat Bu/A	Crop productivity index for optimum management	*n NCCPI Soybeans
**8107A+	Sawmill silt loam, 0 to 2 percent slopes, occasionally flooded, overwash	1.76	0.4%		> 6.5ft.	**191	**61	**72	**140	76
**145C2	Saybrook silt loam, 5 to 10 percent slopes, eroded	1.48	0.4%		> 6.5ft.	**166	**53	**64	**123	66
**93D	Rodman gravelly sandy loam, 6 to 12 percent slopes	1.23	0.3%		> 6.5ft.	**99	**36	**37	**77	23
**199C2	Plano silt loam, 5 to 10 percent slopes, eroded	0.67	0.2%		> 6.5ft.	**180	**56	**69	**132	68
8451A	Lawson silt loam, cool mesic, 0 to 2 percent slopes, occasionally flooded	0.15	0.0%		> 6.5ft.	190	61	73	140	86
Weighted Average						193.5	60.4	73.2	141.5	*n 77.5

Table: Optimum Crop Productivity Ratings for Illinois Soil EFOTG are sourced from Bulletin 811 calculated Map Unit Base Yield Indices, and adjusted (Adj) for slope, erosion, flooding, and surface texture. Publication Date: 02-08-2023
 Crop yields and productivity (B811 EFOTG) are maintained at the following USDA web site: 2023 Illinois Soil Productivity and Yield Indices: <https://efotg.sc.egov.usda.gov/#/state/IL/documents/section=2&folder=52809>

** Base indexes from Bulletin 811 adjusted for slope, erosion, flooding, and surface texture according to the Il. Soils EFOTG

*n: The aggregation method is "Weighted Average using all components"

Topography Hillshade



Source: USGS 10 meter dem
 Interval(ft): 4
 Min: 745.9
 Max: 800.0
 Range: 54.1
 Average: 772.2
 Standard Deviation: 7.58 ft



7-14N-8E
Bureau County
Illinois

Boundary Center: 41° 12' 43.58, -89° 37' 48.1

BRUMMEL REALTY LLC
 1127 E. Bridge Street, Suite 117 • Moline, IL 62450
 Office: 662-544-1000 • Fax: 662-544-1076

Maps Provided By:
surety
 CUSTOMIZED ONLINE MAPPING

© AgriData, Inc. 2023 www.AgriDataInc.com
 Field borders provided by Farm Service Agency as of 5/21/2008.



Abbreviated 156 Farm Record

Operator Name :
CRP Contract Number(s) : 10094, 10095
Recon ID : None
Transferred From : None
ARCPLC G//F Eligibility : Eligible

Farm Land Data

Farmland	Cropland	DCP Cropland	WBP	EWP	WRP	GRP	Sugarcane	Farm Status	Number Of Tracts
436.81	425.90	425.90	0.00	0.00	0.00	0.00	0.0	Active	2
State Conservation	Other Conservation	Effective DCP Cropland		Double Cropped		CRP	MPL	DCP Ag.Rel. Activity	SOD
0.00	0.00	406.20		0.00		19.70	0.00	0.00	0.00

Crop Election Choice

ARC Individual	ARC County	Price Loss Coverage
None	CORN, SOYBN	None

DCP Crop Data

Crop Name	Base Acres	CCC-505 CRP Reduction Acres	PLC Yield	HIP
Corn	296.70	0.00	164	0
Soybeans	98.90	0.00	45	0
TOTAL	395.60	0.00		

NOTES

--

Tract Number : 7887
Description : Sec 7 18 Milo Twp
FSA Physical Location : ILLINOIS/BUREAU
ANSI Physical Location : ILLINOIS/BUREAU
BIA Unit Range Number :
HEL Status : NHEL: No agricultural commodity planted on undetermined fields
Wetland Status : Wetland determinations not complete
WL Violations : None
Owners : ALICE M ROBINSON TRUST
Other Producers :
Recon ID : None

Tract Land Data

Farm Land	Cropland	DCP Cropland	WBP	EWP	WRP	GRP	Sugarcane
278.85	272.59	272.59	0.00	0.00	0.00	0.00	0.0

Abbreviated 156 Farm Record

Tract 7887 Continued ...

State Conservation	Other Conservation	Effective DCP Cropland	Double Cropped	CRP	MPL	DCP Ag. Rel Activity	SOD
0.00	0.00	264.19	0.00	8.40	0.00	0.00	0.00

DCP Crop Data

Crop Name	Base Acres	CCC-505 CRP Reduction Acres	PLC Yield
Corn	192.97	0.00	164
Soybeans	64.32	0.00	45
TOTAL	257.29	0.00	

NOTES

Tract Number : 9260

Description : SEC 7 Milo Twp
FSA Physical Location : ILLINOIS/BUREAU
ANSI Physical Location : ILLINOIS/BUREAU
BIA Unit Range Number :
HEL Status : NHEL: No agricultural commodity planted on undetermined fields
Wetland Status : Wetland determinations not complete
WL Violations : None
Owners : ALICE M ROBINSON TRUST
Other Producers :
Recon ID : None

Tract Land Data

Farm Land	Cropland	DCP Cropland	WBP	EWP	WRP	GRP	Sugarcane
157.96	153.31	153.31	0.00	0.00	0.00	0.00	0.0
State Conservation	Other Conservation	Effective DCP Cropland	Double Cropped	CRP	MPL	DCP Ag. Rel Activity	SOD
0.00	0.00	142.01	0.00	11.30	0.00	0.00	0.00

DCP Crop Data

Crop Name	Base Acres	CCC-505 CRP Reduction Acres	PLC Yield
Corn	103.73	0.00	164
Soybeans	34.58	0.00	45
TOTAL	138.31	0.00	

NOTES

ILLINOIS
BUREAU
Form: FSA-156EZ



United States Department of Agriculture
Farm Service Agency

FARM : 7408

Prepared : 4/3/24 8:56 AM CST

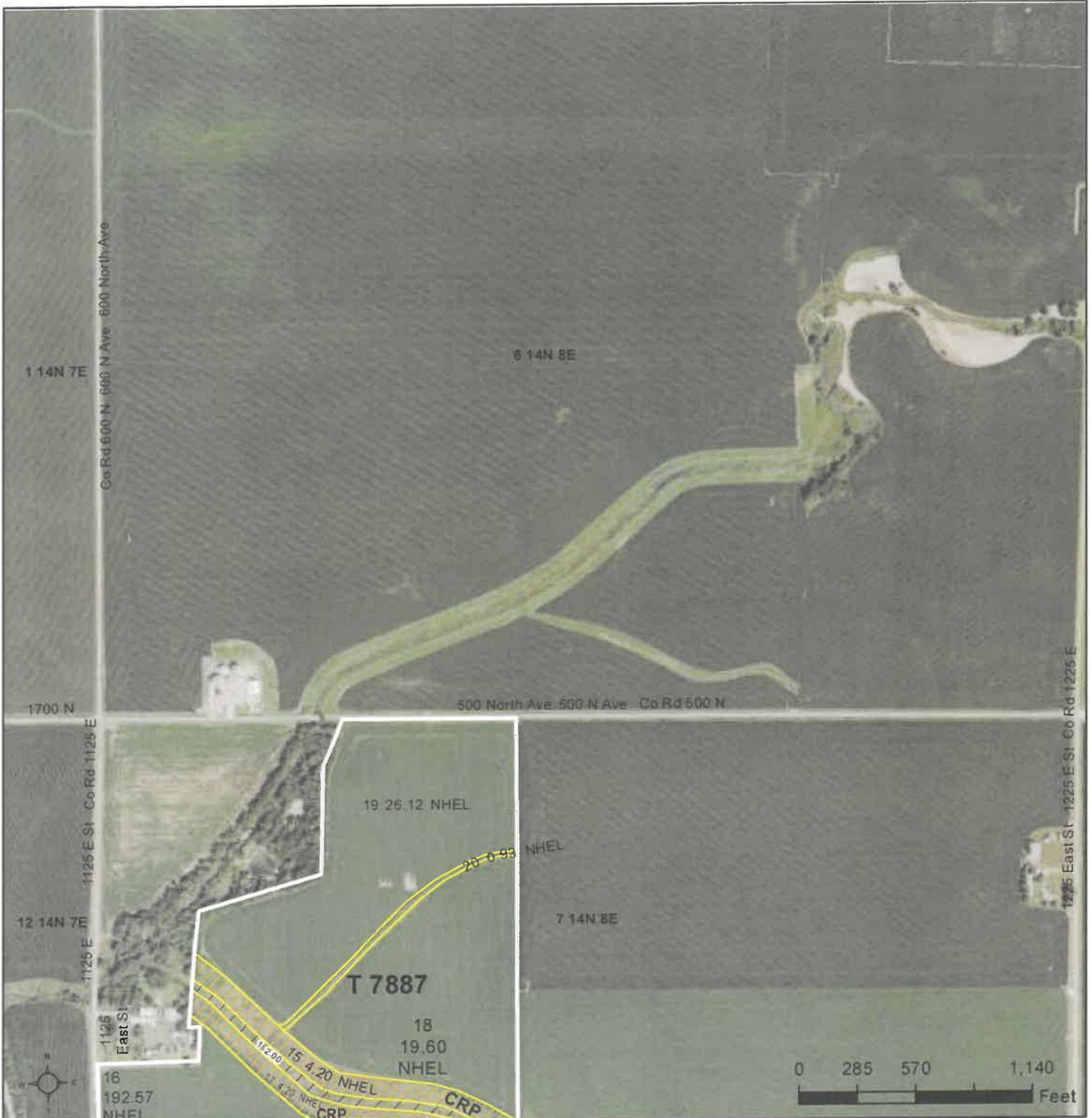
Crop Year : 2024

Abbreviated 156 Farm Record

In accordance with Federal civil rights law and U.S. Department of Agriculture (USDA) civil rights regulations and policies, the USDA, its Agencies, offices, and employees, and institutions participating in or administering USDA programs are prohibited from discriminating based on race, color, national origin, religion, sex, gender identity (including gender expression), sexual orientation, disability, age, marital status, family/parental status, income derived from a public assistance program, political beliefs, or reprisal or retaliation for prior civil rights activity, in any program or activity conducted or funded by USDA (not all bases apply to all programs). Remedies and complaint filing deadlines vary by program or incident.

Persons with disabilities who require alternative means of communication for program information (e.g., Braille, large print, audiotape, American Sign Language, etc.) should contact the responsible Agency or USDA's TARGET Center at (202) 720-2600 (voice and TTY) or contact USDA through the Federal Relay Service at (800) 877-8339. Additionally, program information may be made available in languages other than English.

To file a program discrimination complaint, complete the USDA Program Discrimination Complaint Form, AD-3027, found online at http://www.ascr.usda.gov/complaint_filing_cust.html and at any USDA office or write a letter addressed to USDA and provide in the letter all of the information requested in the form. To request a copy of the complaint form, call (866) 632-9992. Submit your completed form or letter to USDA by: (1) mail: U.S. Department of Agriculture Office of the Assistant Secretary for Civil Rights 1400 Independence Avenue, SW Washington, D.C. 20250-9410; (2) fax: (202) 690-7442; or (3) e-mail: program.intake@usda.gov USDA is an equal opportunity provider, employer, and lender.



Legend

- Tract Boundary
- Non-Cropland
- Cropland
- CRP

Wetland Determination Identifiers

- Restricted Use
- Limited Restrictions
- Exempt from Conservation Compliance Provisions

2024 Program Year

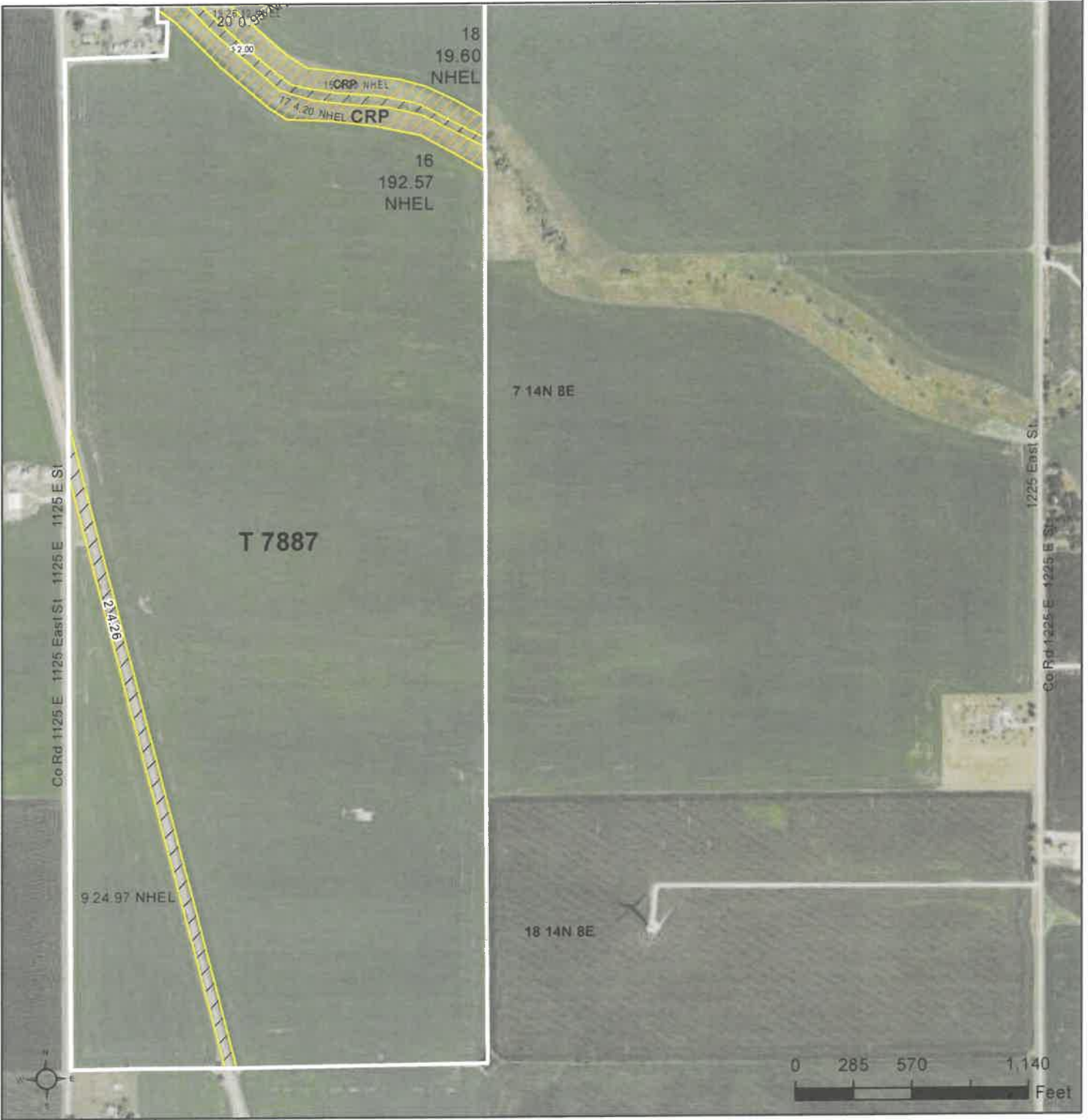
Map Created March 18, 2024

Farm 7408
Tract 7887

Tract Cropland Total: 272.59 acres

IL011_T7887_A1

United States Department of Agriculture (USDA) Farm Service Agency (FSA) maps are for FSA Program administration only. This map does not represent a legal survey or reflect actual ownership; rather it depicts the information provided directly from the producer and/or National Agricultural Imagery Program (NAIP) imagery. The producer accepts the data 'as is' and assumes all risks associated with its use. USDA-FSA assumes no responsibility for actual or consequential damage incurred as a result of any user's reliance on this data outside FSA Programs. Wetland identifiers do not represent the size, shape, or specific determination of the area. Refer to your original determination (CPA-026 and attached maps) for exact boundaries and determinations or contact USDA Natural Resources Conservation Service (NRCS).



Legend

- Tract Boundary
- Non-Cropland
- Cropland
- CRP

Wetland Determination Identifiers

- Restricted Use
- Limited Restrictions
- Exempt from Conservation Compliance Provisions

2024 Program Year
Map Created March 18, 2024

Farm 7408
Tract 7887

Tract Cropland Total: 272.59 acres

IL011_T7887_B1

United States Department of Agriculture (USDA) Farm Service Agency (FSA) maps are for FSA Program administration only. This map does not represent a legal survey or reflect actual ownership; rather it depicts the information provided directly from the producer and/or National Agricultural Imagery Program (NAIP) imagery. The producer accepts the data 'as is' and assumes all risks associated with its use. USDA-FSA assumes no responsibility for actual or consequential damage incurred as a result of any user's reliance on this data outside FSA Programs. Wetland identifiers do not represent the size, shape, or specific determination of the area. Refer to your original determination (CPA-026 and attached maps) for exact boundaries and determinations or contact USDA Natural Resources Conservation Service (NRCS).



Legend

- Tract Boundary
- Non-Cropland
- Cropland
- CRP

Wetland Determination Identifiers

- Restricted Use
- ▼ Limited Restrictions
- Exempt from Conservation Compliance Provisions

2024 Program Year
Map Created March 18, 2024

Farm 7408
Tract 9260

Tract Cropland Total: 153.31 acres

IL011_T9260

United States Department of Agriculture (USDA) Farm Service Agency (FSA) maps are for FSA Program administration only. This map does not represent a legal survey or reflect actual ownership; rather it depicts the information provided directly from the producer and/or National Agricultural Imagery Program (NAIP) imagery. The producer accepts the data 'as is' and assumes all risks associated with its use. USDA-FSA assumes no responsibility for actual or consequential damage incurred as a result of any user's reliance on this data outside FSA Programs. Wetland identifiers do not represent the size, shape, or specific determination of the area. Refer to your original determination (CPA-026 and attached maps) for exact boundaries and determinations or contact USDA Natural Resources Conservation Service (NRCS).

CRP-1 (01-08-24)	U.S. DEPARTMENT OF AGRICULTURE Commodity Credit Corporation		1. ST. & CO. CODE & ADMIN. LOCATION 17 011	2. SIGN-UP NUMBER 44
	CONSERVATION RESERVE PROGRAM CONTRACT			3. CONTRACT NUMBER 10095
5A. COUNTY FSA OFFICE ADDRESS (Include Zip Code) BUREAU COUNTY FARM SERVICE AGENCY OFFICE 312 E BACKBONE RD SUITE 1 PRINCETON, IL61356-9278			6. TRACT NUMBER 7887	7. CONTRACT PERIOD FROM: (MM-DD-YYYY) 10-01-2013 TO: (MM-DD-YYYY) 09-30-2028
			8. SIGNUP TYPE: CREP - Illinois	
5B. COUNTY FSA OFFICE PHONE NUMBER (Include Area Code): (815) 875-8732 x2				

THIS CONTRACT is entered into between the Commodity Credit Corporation (referred to as "CCC") and the undersigned owners, operators, or tenants (referred to as "the Participant"). The Participant agrees to place the designated acreage into the Conservation Reserve Program ("CRP") or other use set by CCC for the stipulated contract period from the date the Contract is executed by the CCC and the Participant. The Participant also agrees to implement on such designated acreage the Conservation Plan developed for such acreage and approved by the CCC and the Participant. Additionally, the Participant and CCC agree to comply with the terms and conditions contained in this Contract, including the Appendix to this Contract, entitled Appendix to CRP-1, Conservation Reserve Program Contract (referred to as "Appendix"). By signing below, the Participant acknowledges receipt of a copy of the Appendix/Appendices for the applicable contract period. The terms and conditions of this contract are contained in this Form CRP-1 and in the CRP-1 Appendix and any addendum thereto. BY SIGNING THIS CONTRACT PARTICIPANTS ACKNOWLEDGE RECEIPT OF THE FOLLOWING FORMS: CRP-1; CRP-1 Appendix and any addendum thereto; and, CRP-2, CRP-2C, CRP-2G, or CRP-2C30, as applicable.

9A. Rental Rate Per Acre	\$ 353.59	10. Identification of CRP Land (See Page 2 for additional space)				
9B. Annual Contract Payment	\$ 2,970.00	A. Tract No.	B. Field No.	C. Practice No.	D. Acres	E. Total Estimated Cost-Share
9C. First Year Payment	\$	7887	0015	CP21	4.20	\$ 0.00
(Item 9C is applicable only when the first year payment is prorated.)		7887	0017	CP21	4.20	\$ 0.00

11. PARTICIPANTS (If more than three individuals are signing, see Page 3.)

A(1) PARTICIPANT'S NAME AND ADDRESS (Include Zip Code)	(2) SHARE	(3) SIGNATURE (By)	(4) TITLE/RELATIONSHIP OF THE INDIVIDUAL SIGNING IN THE REPRESENTATIVE CAPACITY	(5) DATE (MM-DD-YYYY)
ALICE M ROBINSON TRUST BERDMEL REALTY LLC 1107 S BRIDGE ST STE D TORKVILLE, IL60560-1747	100.00 %			
B(1) PARTICIPANT'S NAME AND ADDRESS (Include Zip Code)	%			
C(1) PARTICIPANT'S NAME AND ADDRESS (Include Zip Code)	%			

12. CCC USE ONLY	A. SIGNATURE OF CCC REPRESENTATIVE	B. DATE (MM-DD-YYYY)
-------------------------	------------------------------------	----------------------

NOTE: The following statement is made in accordance with the Privacy Act of 1974 (5 USC 552a - as amended). The authority for requesting the information identified on this form is the Commodity Credit Corporation Charter Act (15 U.S.C. 714 et seq.), the Food Security Act of 1985 (16 U.S.C. 3801 et seq.), the Agricultural Act of 2014 (16 U.S.C. 3831 et seq.), the Agricultural Improvement Act of 2018 (Pub. L. 115-334), the Further Continuing Appropriations and Other Extensions Act, 2024 (Pub. L. 118-22), and the Conservation Reserve Program 7 CFR Part 1410. The information will be used to determine eligibility to participate in and receive benefits under the Conservation Reserve Program. The information collected on this form may be disclosed to other Federal, State, Local government agencies, Tribal agencies, and nongovernmental entities that have been authorized access to the information by statute or regulation and/or as described in applicable Routine Uses identified in the System of Records Notice for USDA/FSA-2, Farm Records File (Automated). Providing the requested information is voluntary. However, failure to furnish the requested information will result in a determination of ineligibility to participate in and receive benefits under the Conservation Reserve Program.

Paperwork Reduction Act (PRA) Statement: The information collection is exempted from PRA as specified in 16 U.S.C. 3846(b)(1). The provisions of appropriate criminal and civil fraud, privacy, and other statutes may be applicable to the information provided. **RETURN THIS COMPLETED FORM TO YOUR COUNTY FSA OFFICE.**

In accordance with Federal civil rights law and U.S. Department of Agriculture (USDA) civil rights regulations and policies, the USDA, its Agencies, offices, and employees, and institutions participating in or administering USDA programs are prohibited from discriminating based on race, color, national origin, religion, sex, gender identity (including gender expression), sexual orientation, disability, age, marital status, family/parental status, income derived from a public assistance program, political beliefs, or reprisal or retaliation for prior civil rights activity, in any program or activity conducted or funded by USDA (not all bases apply to all programs). Remedies and complaint filing deadlines vary by program or incident.

Persons with disabilities who require alternative means of communication for program information (e.g., Braille, large print, audiotape, American Sign Language, etc.) should contact the responsible Agency or USDA's TARGET Center at (202) 720-2600 (voice and TTY) or contact USDA through the Federal Relay Service at (800) 877-8339. Additionally, program information may be made available in languages other than English.

To file a program discrimination complaint, complete the USDA Program Discrimination Complaint Form, AD-3027, found online at http://www.ascr.usda.gov/complaint_filing_cust.html and at any USDA office or write a letter addressed to USDA and provide in the letter all of the information requested in the form. To request a copy of the complaint form, call (866) 632-9992. Submit your completed form or letter to USDA by: (1) mail: U.S. Department of Agriculture, Office of the Assistant Secretary for Civil Rights, 1400 Independence Avenue, SW Washington, D.C. 20250-9410; (2) fax: (202) 690-7442; or (3) email: program.intake@usda.gov. USDA is an equal opportunity provider, employer, and lender.

CRP-1 (01-08-24) U.S. DEPARTMENT OF AGRICULTURE Commodity Credit Corporation CONSERVATION RESERVE PROGRAM CONTRACT	1. ST. & CO. CODE & ADMIN. LOCATION 17 011	2. SIGN-UP NUMBER 44
	3. CONTRACT NUMBER 10094	4. ACRES FOR ENROLLMENT 11.30
5A. COUNTY FSA OFFICE ADDRESS (Include Zip Code) BUREAU COUNTY FARM SERVICE AGENCY OFFICE 312 E BACKBONE RD SUITE 1 PRINCETON, IL61356-9278	6. TRACT NUMBER 9260	7. CONTRACT PERIOD FROM: (MM-DD-YYYY) 10-01-2013 TO: (MM-DD-YYYY) 09-30-2028
5B. COUNTY FSA OFFICE PHONE NUMBER (Include Area Code): (815) 875-8732 x2	8. SIGNUP TYPE: CREP - Illinois	

THIS CONTRACT is entered into between the Commodity Credit Corporation (referred to as "CCC") and the undersigned owners, operators, or tenants (referred to as "the Participant".) The Participant agrees to place the designated acreage into the Conservation Reserve Program ("CRP") or other use set by CCC for the stipulated contract period from the date the Contract is executed by the CCC. The Participant also agrees to implement on such designated acreage the Conservation Plan developed for such acreage and approved by the CCC and the Participant. Additionally, the Participant and CCC agree to comply with the terms and conditions contained in this Contract, including the Appendix to this Contract, entitled Appendix to CRP-1, Conservation Reserve Program Contract (referred to as "Appendix"). By signing below, the Participant acknowledges receipt of a copy of the Appendix/Appendices for the applicable contract period. The terms and conditions of this contract are contained in this Form CRP-1 and in the CRP-1 Appendix and any addendum thereto. BY SIGNING THIS CONTRACT PARTICIPANTS ACKNOWLEDGE RECEIPT OF THE FOLLOWING FORMS: CRP-1; CRP-1 Appendix and any addendum thereto; and, CRP-2, CRP-2C, CRP-2G, or CRP-2C30, as applicable.

9A. Rental Rate Per Acre	\$ 365.27	10. Identification of CRP Land (See Page 2 for additional space)				
9B. Annual Contract Payment	\$ 4,128.00	A. Tract No.	B. Field No.	C. Practice No.	D. Acres	E. Total Estimated Cost-Share
9C. First Year Payment	\$	9260	0011	CP21	5.00	\$ 0.00
(Item 9C is applicable only when the first year payment is prorated.)		9260	0013	CP21	6.30	\$ 0.00

11. PARTICIPANTS (If more than three individuals are signing, see Page 3.)				
A(1) PARTICIPANT'S NAME AND ADDRESS (Include Zip Code) <small>ALICE M ROBINSON TRUST VBRUMMEL REALTY LLC 1107 S BRIDGE ST STE D YORKVILLE, IL60560-1747</small>	(2) SHARE 100.00 %	(3) SIGNATURE (By)	(4) TITLE/RELATIONSHIP OF THE INDIVIDUAL SIGNING IN THE REPRESENTATIVE CAPACITY	(5) DATE (MM-DD-YYYY)
B(1) PARTICIPANT'S NAME AND ADDRESS (Include Zip Code)	(2) SHARE %	(3) SIGNATURE (By)	(4) TITLE/RELATIONSHIP OF THE INDIVIDUAL SIGNING IN THE REPRESENTATIVE CAPACITY	(5) DATE (MM-DD-YYYY)
C(1) PARTICIPANT'S NAME AND ADDRESS (Include Zip Code)	(2) SHARE %	(3) SIGNATURE (By)	(4) TITLE/RELATIONSHIP OF THE INDIVIDUAL SIGNING IN THE REPRESENTATIVE CAPACITY	(5) DATE (MM-DD-YYYY)

12. CCC USE ONLY	A. SIGNATURE OF CCC REPRESENTATIVE	B. DATE (MM-DD-YYYY)
-------------------------	------------------------------------	----------------------

NOTE: The following statement is made in accordance with the Privacy Act of 1974 (5 USC 552a - as amended). The authority for requesting the information identified on this form is the Commodity Credit Corporation Charter Act (15 U.S.C. 714 et seq.), the Food Security Act of 1985 (16 U.S.C. 3801 et seq.), the Agricultural Act of 2014 (16 U.S.C. 3831 et seq.), the Agricultural Improvement Act of 2018 (Pub. L. 115-334), the Further Continuing Appropriations and Other Extensions Act, 2024 (Pub. L. 118-22), and the Conservation Reserve Program 7 CFR Part 1410. The information will be used to determine eligibility to participate in and receive benefits under the Conservation Reserve Program. The information collected on this form may be disclosed to other Federal, State, Local government agencies, Tribal agencies, and nongovernmental entities that have been authorized access to the information by statute or regulation and/or as described in applicable Routine Uses identified in the System of Records Notice for USDA/FSA-2, Farm Records File (Automated). Providing the requested information is voluntary. However, failure to furnish the requested information will result in a determination of ineligibility to participate in and receive benefits under the Conservation Reserve Program.

Paperwork Reduction Act (PRA) Statement: The information collection is exempted from PRA as specified in 16 U.S.C. 3846(b)(1). The provisions of appropriate criminal and civil fraud, privacy, and other statutes may be applicable to the information provided. **RETURN THIS COMPLETED FORM TO YOUR COUNTY FSA OFFICE.**

In accordance with Federal civil rights law and U.S. Department of Agriculture (USDA) civil rights regulations and policies, the USDA, its Agencies, offices, and employees, and institutions participating in or administering USDA programs are prohibited from discriminating based on race, color, national origin, religion, sex, gender identity (including gender expression), sexual orientation, disability, age, marital status, family/parental status, income derived from a public assistance program, political beliefs, or reprisal or retaliation for prior civil rights activity, in any program or activity conducted or funded by USDA (not all bases apply to all programs). Remedies and complaint filing deadlines vary by program or incident.

Persons with disabilities who require alternative means of communication for program information (e.g., Braille, large print, audiotape, American Sign Language, etc.) should contact the responsible Agency or USDA's TARGET Center at (202) 720-2600 (voice and TTY) or contact USDA through the Federal Relay Service at (800) 877-8339. Additionally, program information may be made available in languages other than English.

To file a program discrimination complaint, complete the USDA Program Discrimination Complaint Form, AD-3027, found online at http://www.ascr.usda.gov/complaint_filing_cust.html and at any USDA office or write a letter addressed to USDA and provide in the letter all of the information requested in the form. To request a copy of the complaint form, call (866) 632-9992. Submit your completed form or letter to USDA by: (1) mail: U.S. Department of Agriculture Office of the Assistant Secretary for Civil Rights 1400 Independence Avenue, SW Washington, D.C. 20250-9410; (2) fax: (202) 690-7442; or (3) email: program.intake@usda.gov. USDA is an equal opportunity provider, employer, and lender.